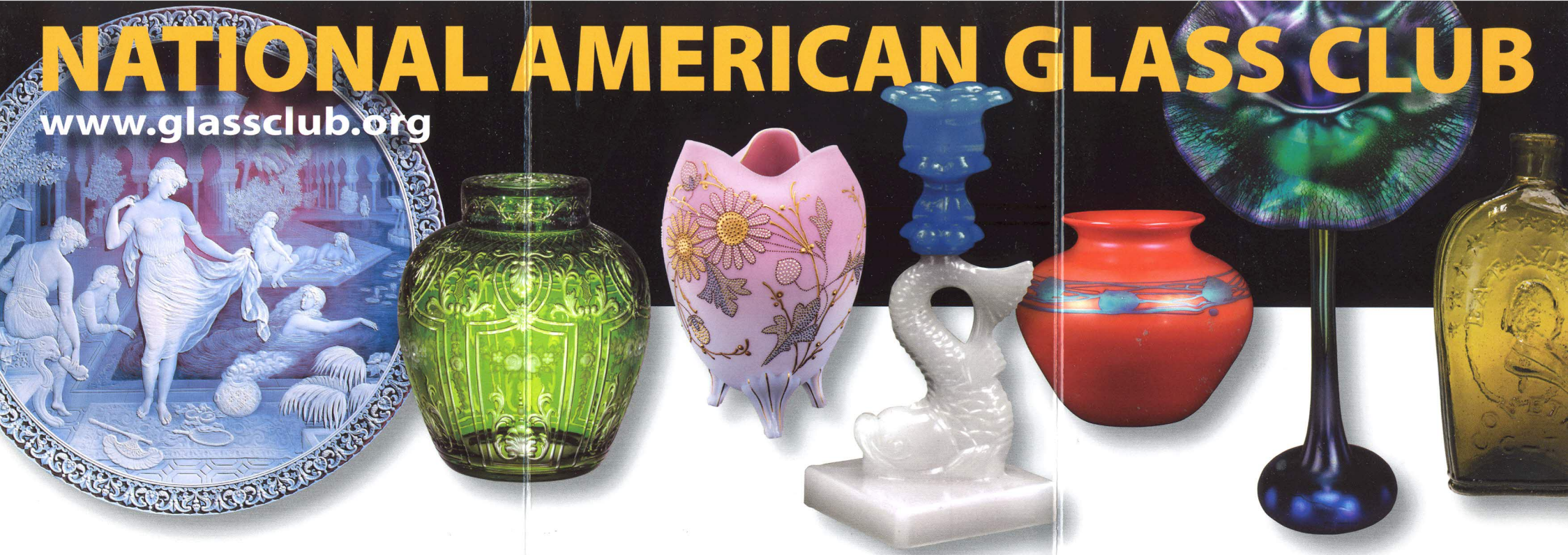


NATIONAL AMERICAN GLASS CLUB

www.glassclub.org



IF YOU:

- Have a passion for glass.
- Are just beginning to learn about glass but you don't know where to start.
- Want to meet others who collect and enjoy glass.
- Would like to enhance and share your knowledge of glass.

Images courtesy of The Corning Museum of Glass.

Cover Image:

Royal Flemish vase. Mt. Washington Glass Company, 1889–1895 (63.4.138).

From left to right:

Moorish Bathers. Thomas Webb & Sons, 1898 (92.2.10, bequest of Mrs. Leonard S. Rakow).

Covered potpourri jar. H. P. Sinclair and Company, about 1926 (84.4.165, gift of Mrs. Douglas Sinclair).

Peach Blow vase. Mt. Washington Glass Company, about 1886–1890 (2002.4.39, gift of Barbara Olsen in memory of John K. Olsen).

THEN JOIN US!

- We are the **NATIONAL AMERICAN GLASS CLUB**, a non-profit educational organization founded in 1933 for PEOPLE LIKE YOU—glass collectors, scholars, dealers, artists, educators, and students who are interested in the study and appreciation of glass regardless of type and period.
- To learn about upcoming events, see examples of our publications, use links to members' Web sites, and much, much more, visit the NAGC Web site at www.glassclub.org or write to us at National American Glass Club, P.O. Box 24, Elkland, PA 16920.

Dolphin candlestick. New England, about 1840–1860 (62.4.46).

Rouge Flambé vase. Steuben Glass Works, Frederick Carder, about 1916 (2005.4.5, gift of Tim and Paddy Welles).

Jack-in-the-Pulpit vase. Tiffany Studios, about 1912 (62.4.61).

Flask. Stebbins and Stebbins, about 1824–1825 (60.4.87).

MEMBERS' BENEFITS

QUALITY PUBLICATIONS

The Glass Club Bulletin, available only through membership, is a scholarly journal published three times each year. Articles present current research not only in American glass, but also glass from ancient times to the work of contemporary artists. Back issues are available.

Glass Shards, the NAGC newsletter published quarterly, will keep you up-to-date on glass exhibits, shows, recent publications and club activities.

Annual Membership Directory helps you identify members who share your specific interests and provides addresses for individual and institutional members.

JOIN TODAY!

Name _____

2nd Name _____

(household membership)

Address _____

City _____

State _____ ZIP _____

E-mail _____

Phone _____

(optional—will not be published)

OMIT from Membership Directory if checked:

My name Postal address E-mail address

Specific Glass Interests _____

How did you get our brochure? _____

MEMBERSHIP CATEGORIES

- Full-time student: free with current ID
- Individual: \$35 Donor: \$100
- Household: \$40 (limit two people)
- Contributing: \$50 Life Individual: \$400
- Institution: \$60 Life Household: \$500

Clip and mail to:

NATIONAL AMERICAN GLASS CLUB
P.O. Box 24
Elkland, PA 16920

All payments sent from
outside the U.S. must be
in U.S. dollars.

To join via E-mail and Pay Pal, go to www.glassclub.org.

MEMBERS' BENEFITS

NAGC NATIONAL GLASS SEMINARS

Our national seminar is held every spring in various cities across the U.S. Activities include lectures by prominent glass curators, authors, collectors and artists; tours of museums, private collections, glass studios and historic sites; our annual business meeting; plus great food, fun and more! Members receive a discount for early registration.

LOCAL CHAPTER MEETINGS

Local chapters are found across the country. They offer exciting opportunities to get acquainted with other members who are willing to share their knowledge and enthusiasm for glass. If you don't have a chapter in your area, we'll help you start one!

EXPERT IDENTIFICATION SERVICE

The combined expertise of our members and research resources is a significant advantage for club members.

EDUCATIONAL PROGRAMS

NAGC has an extensive collection of audio-visual materials pertaining to the history and technology of glass. For a minimal fee, members may borrow these for personal use, teaching, or chapter programs.

ACCESS TO BOOKS ON GLASS AT THE BOSTON ATHENAEUM LIBRARY

Our founding organization, The National Early American Glass Club Ltd. began a resource collection that is now housed at the Boston Athenaeum Library. The Athenaeum has added to its collection and the entire catalog is on-line in the Athenaeum's Athena catalog. Books are available through interlibrary loan.

